



# THE UNLIMITED PALETTE

**November 2025**

The purpose of the Greeley Art Association (GAA) shall be to open communication among artists, to promote and encourage increased involvement in the arts through education, to share knowledge, to cooperate in promoting our mutual understanding and appreciation of the arts, and -for those so motivated- to foster the betterment of our art and its marketability.

## GAA BOARD MEMBERS 2025

**President:**

Gail Mothershed  
[tomandgailm@gmail.com](mailto:tomandgailm@gmail.com)

**Vice President:**

Tom Mothershed  
[tomandgailm@gmail.com](mailto:tomandgailm@gmail.com)

**Immediate Past President:**

Debbie Pilch  
[debbiepilch@comcast.net](mailto:debbiepilch@comcast.net)

**Secretary:**

Claire McNear  
[mctigercmc@aol.com](mailto:mctigercmc@aol.com)

**Treasurer:**

Cameron Clements  
[cameronclements93@gmail.com](mailto:cameronclements93@gmail.com)

**Membership:**

Joe Mora  
[josephmora1@mac.com](mailto:josephmora1@mac.com)

**Newsletter:**

Michelle Hamilton  
[quincylab@gmail.com](mailto:quincylab@gmail.com)

**Program:**

Colette Pitcher  
[colette@colettepitcher.com](mailto:colette@colettepitcher.com)

**Website:**

Colette Pitcher

**Members at Large:**

Mary Lynne Pruett  
[mlpruett@centurylink.net](mailto:mlpruett@centurylink.net)

Roger Huffenberger  
[rogersArt121@gmail.com](mailto:rogersArt121@gmail.com)

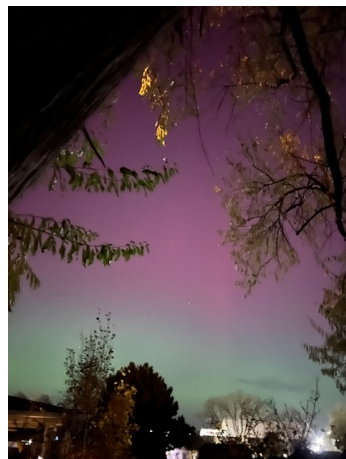
## Solar Activity Creates Geomagnetic Storm in Northern Colorado - November 11, 2025



Claire McNear - Eaton  
11-11-25



Teresa Mueller - Johnstown  
11-11-25



Linda Johnston - Greeley  
11-11-25



Colette Pitcher - Eaton  
11-11-25



Member Spotlight

## DALE HARDING

<https://www.daleharding.com/>

Interviewed by Michelle Hamilton

A longtime resident of New England, Dale Harding now resides in Greeley, Colorado. Dale is a full-time artist who describes his work as a “bit eclectic” shifting between printmaking and painting in oil, acrylic and pastel media. His style is largely impressionistic with doses of colorism and a “pinch” of expressionism.

Born in Upland, California, Dale spent his early years in the Los Angeles area. As a youngster, Dale had a strong interest in creative drawing. At five or six years of age, Dale recalled traveling cross country in the family 1956 Ford along the original Route 66 stretching between Santa Monica, California and Chicago, Illinois. By car, the trip was well-over 2500 miles, Dale whiled away the hours drawing in a grocery-store sketch book. He drew a lot from his own imagination but recalled that he took inspiration from the variety of the geography, iconic signs, and futuristic buildings and sculptures that dotted the Route 66 landscape. Soon, his sketch book was full of outer spaceships, towering muffler-men, robots and magical-type creatures inspired by what he saw on his trips along the *Mainstreet of America* (aka Route 66).

At age 10, Dale’s immediate family relocated to Pennsylvania to be closer to his extended family. Despite the transitions in location, schools and getting used to east coast winters, Dale’s passion for drawing and painting grew stronger. At age 11, his Christmas wish list included a starter set of oil paints and brushes. His aunt, who was an accomplished painter in her own right, frequently invited him to join her on plein air painting excursions. Throughout high school, Dale improved as he continued to practice his painting; he ultimately decided to pursue art as a career.

In college, Dale earned bachelor’s and master’s degrees in Art Education with a focus on painting and printmaking. After graduating college, he secured a job teaching art in the Easton, Pennsylvania Public School System. After a decade of teaching, Dale transitioned to the industrial work sector. His interest in printmaking mechanics made Dale a great fit within the commercial screen printing industry. As the field of screen

printing evolved into digital printing, Dale built additional skills and knowledge in digital textile printing applications. During his industry-based career, he held positions in sales management, technical training management, as well as research and product development for several American and international companies.

Retirement in 2017, brought Dale and his wife to Greeley to be closer to their son, daughter and grandchildren in northern Colorado. Dale takes his inspiration from “Colorado’s unique urban and rural architecture as well as the beauty nature provides in its majestic mountains and expansive grasslands.” Inspiration also comes from observing the effects of light and shadow and their influence on color and mood. Dale paints the high value contrasts frequently seen in Colorado and the Southwest as well as the limited value ranges found in nocturnes and fog shrouded coastal areas.

October through March is “playtime” when Dale experiments with media, color, composition, and texture (gel plates). The creative experimentation provides many artistic “ah ha” moments that can be incorporated into future artistic endeavors. Dale paints with oil, acrylic and pastel, not favoring one media over another. He believes the variety keeps his work fresh, somewhat experimental and always begging the question “what if?” Dale makes his own handmade pastels. After much experimentation, he created molds and devised multiple recipes that accounted for the unique peculiarities of each pigment, enabling him to make pastels with the color and hardness he desired.

Artists who intrigue Dale include:

Joseph Albers, an American-German artist best known for his iconic color square paintings. Albers’ writings are considered invaluable contributions to color theory and color relationship. Dale relishes Albers’ color theory and color relationship writings.

Colley Whisson, an Australian oil painter with an impressionist style. Whisson aims to tell a visual story with clarity and sophistication while also distorting and abstracting the image yet still maintaining a realistic image. Dale admires Colley’s brush strokes working in oil.

Ryan Jensen, a California resident who, after an eight-year career in the Marine Corps, took up drawing and painting. Now an award winning artist, Ryan notes that his best work seems to happen when he “isn’t trying but just doing.” Letting the work (painting) speak to him, Ryan loves to uncover the ‘story’ in each painting. Dale described Ryan as an enigma with a loose impressionistic style.

Tony Allain, a Scottish-based pastel artist. Tony opines the joy of pastel media is in the immediacy with no need to mix colors on a palette or wait for certain areas to dry. The immediacy allows him to work at an intuitive speed with confidence. Dale described the immediacy as the technique he admires most about Tony's pastel work.

Dale participates regularly in art competitions and has won numerous regional and national awards. He is represented by Osmosis Gallery in Niwot, Colorado as well as the Aspen and Evergreen Gallery in Estes Park, Colorado.

### Original Artwork by Dale Harding



Fern Lake Shadows  
10" X 14" Pastel

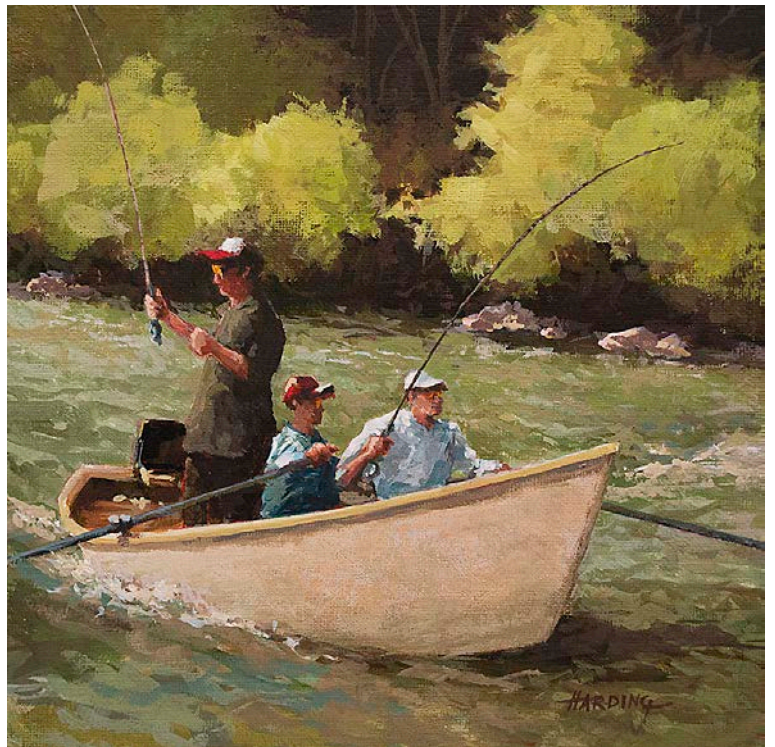
## Original Artwork by Dale Harding



Aspen and Pine  
15" X 9" Oil



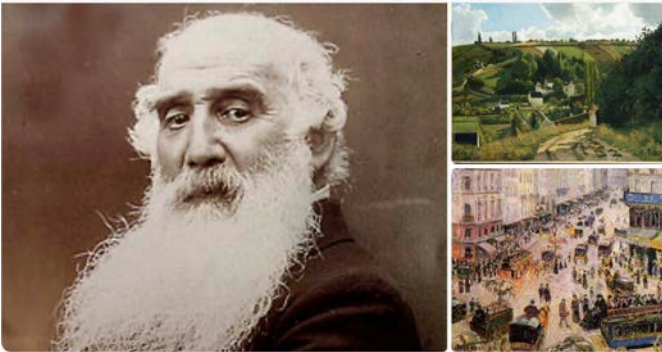
The Red Bucket  
10" X 16" Acrylic



Running the Colorado  
8" X 8" Acrylic Gouache

## PARALLELS BETWEEN ART AND MUSIC

Researched and written by Michelle Hamilton and Chatgpt



The Denver Art Museum (DAM) recently offered DAM members an in-person or a virtual live (vimeo) program of *Behind the Baton LIVE: Pissarro and the Music of Impressionism*. The program complements the current exhibit *The Honest Eye: Camille Pissarro's Impressionism*. Pissarro (1830–1903) was a founding and central figure of the French Impressionist movement. Scott

O'Neil, host of CPR Classical's *Behind the Baton*, and DAM curator, Angelica Daneo, explored how the visual art of Impressionism connected with the music of the same movement.

The commentary by O'Neil and Daneo demonstrated how through visual and musical “impressions”, artists and composers of the movement sought to capture fleeting light, emotion and atmosphere. The focus shifted from dramatic expression to sensory suggestion — painting with sound instead of with pigment. During the program large-scale images of Pissarro's work were projected while pianist-conductor, O'Neil played live music from impressionist composers like Claude Debussy, Maurice Ravel, and Gabriel Fauré.

Impressionist composers (especially Debussy and Ravel) liberated Western harmony from the strict tonal system of the Classical and Romantic eras. Impressionist composers use of modes, whole-tone and pentatonic scales, and ambiguous chords weakened the sense of a single key center. This opened the door for modern harmonic freedom, influencing 20th-century movements like Expressionism, Neoclassicism, and Jazz.

The artists of Impressionism created a revolution in the art world breaking away from the rigid academic Paris Salon system that focused on historical, mythological and religious themes. Using visible brushstrokes, outdoor painting (plein air) and bright color transformed modern painting. Their salon defiance paved the way for modern art movements: Symbolism, Post-Impressionism, Fauvism, Cubism — all of which inherited the right to exhibit outside institutions. By rejecting the Salon, Impressionists changed not just painting, but the entire art world's structure — from state-controlled to artist-driven.

# Handle With Care

Researched and written by Michelle Hamilton and Chatgpt

Last week I purchased a full sheet (22" X 30") of 140 lb watercolor paper. I quickly realized the paper was delicate and required care in handling. I had no idea how to carry the sheet to my car, never mind in the midst of a howling Greeley windstorm (a sheet of watercolor paper in the wind acts like a sail!)

Thankfully, Colette Pitcher provided me with some simple instructions for a short distance haul of the sheet of watercolor paper. Pick up two diagonally opposite corners and hold them tightly without creasing or bending the paper. Apparently, the diagonal fold-in-the-air gives the paper structural rigidity, like a temporary tube. It prevents the sheet from flopping or creasing while walking. It keeps the surface from brushing against your clothes or surroundings.

As a relative *newbie* to the world of art, I find myself lacking knowledge about how to care for my art acquisitions. Properly caring for art is essential to preserve its beauty, value, and longevity. The exact care depends on the medium—oil painting, watercolor, drawing, print, photography or sculpture, etc. There are general guidelines you can follow and basic breakdown of where to start.

## 1. Handling

- Always wash your hands before touching art or wear cotton gloves to prevent oils or dirt from transferring.
- Handle artwork by its edges or frame; avoid touching the surface.
- For fragile works like pastels or charcoal, avoid direct contact entirely.

## 2. Framing and Support (more on mats and glazing on next page)

- Use acid-free mats and backing for works on paper to prevent yellowing or deterioration.
- Ensure frames are sturdy and well-fitted; use UV-filter protective glass or acrylic if possible.
- Avoid frames that touch the surface of the artwork; use spacers for delicate pieces.

## 3. Environmental Conditions

- Temperature: Keep it stable, ideally between 65–75°F (18–24°C). Avoid placing art near heaters, fireplaces, or vents.
- Humidity: Ideal is 40–50% relative humidity. Too high → mold; too low → cracking.
- Light: Avoid direct sunlight. UV rays can fade pigments, yellows paper and weakens canvas fibers. Use UV-filtered windows or display lights.

#### 4. Display Tips

- Rotate displayed works occasionally to reduce prolonged light exposure.
- Keep art away from high-traffic areas to reduce risk of bumps or spills.
- Ensure hanging hardware can support the weight safely.

#### 5. Selecting a Mat

- Start with conservation-grade materials which protects the artwork from acid damage, discoloration and deterioration.
- Best Choices
  - 100% cotton rag mat board is top museum standard. It is pH neutral, long-lasting, ideal for delicate and/or valuable work.
  - Conservation (alpha-cellulose) mat board. It is purified wood pulp which is buffered to resist acidity. Affordable yet still safe.

The **color** of the mat should complement the art without competing with it. Most museum and exhibitions prefer neutral color mats such as white, cream and light gray. The neutral mats avoid color casting or overpowering the art work.

Use colored mats sparingly. Most appropriate when the color is subtle and it enhances, rather than distracts from the artwork. Ensure solid color mats are conservation-grade (most solid colors are alpha-cellulose, not rag). Colored mats can sometimes be *trendy* and may quickly go out of style.

Photographs benefit from white, off-white or black mats. If using color photography use unbuffered board. A buffered board is OK for black and white silver gelatin prints.

Determine the **border width** - a wider border give the artwork room to “breathe” and creates a more elegant, contemporary look.

Standard border widths, museum proportions:

- 2"–3" borders for small works (up to 11 X 14 inches)
- 3"–5" borders for medium works (11 × 14 up to 18 × 24 inches)
- 5"+ borders for large pieces (larger than 18 × 24 inches)

The **mat window** should be:

- about 1/8" to 1/4" smaller than the artwork’s image area
- enough to hold it visually in place without exposing raw edges (unless floating)

Optical centering - the bottom margin is usually slightly wider than the top—this prevents the artwork from looking visually “low.”

## 6. Glazing Art

In the art conservation and framing world, the word “*glazing*” refers to the transparent protective layer (glass or acrylic) that sits in front of the artwork. Paper art is generally glazed. Painted canvas is typically not glazed unless the medium requires it. When done correctly, glazing protects the art without compromising its appearance, stability, or long-term longevity.

Types of Conservation Glazing:

### Glass

- Standard glass: basic physical protection.
- UV-filtering glass: blocks harmful ultraviolet light.
- Low-reflective / anti-reflective glass: clearer visibility.
- Museum glass: premium glass with highest clarity, anti-reflective, ~99% UV filtration.
- Conservation glass: high-quality framing glass, provides basic clarity, ~99% UV filtration.

### Acrylic (Plexi-glass)

- Lighter than glass.
- Shatter-resistant: ideal for large works or public spaces where safety is a concern.
- Available in UV-filtering and non-glare.

## Why Plexiglass?

*Galleries and museums worldwide have embraced plexiglass as a high quality material for exhibition and resale. Why? It protects artwork without distortion or the risk of shattering. Purchase acrylic plexiglass sheets that are acid-free, lightweight, archival quality, and offered in many variations to fit your purpose, budget and style.*

### *Protecting Your Plexi-glass*

**Hands off** that glass cleaner. *Acrylic is plastic, and the ammonia in most cleaners can create a haze on it, obscuring your art. Instead, use a soft cloth and our acrylic cleaner or just plain water. ~[American Frame](#)*

More information about art care for watercolor collectors and creators is also available on Janine Helton’s blog at: <https://www.janeltonartworks.com/blog/203610/how-to-care-for-and-frame-watercolors-collectors> OR for creators at: <https://www.janeltonartworks.com/nl/?nid=334206&type=html>

# A BRUSH WITH NATURE

## GAA MEMBERS ONLY SHOW



**Tointon Gallery**  
**February 6 - 28, 2026**

*A Brush with Nature* is a curated **GAA MEMBERS ONLY** fine art exhibition that highlights the broad influence of nature and the natural world in all art forms.

2026 GAA Members (artists and photographers) are invited to exhibit works that reflect, interpret, or are inspired by the richness and diversity of nature and the natural world. Works must have been created in the past 5 years (2020-2026).

### Fine Art Categories:

Paintings: watercolor, gouache, acrylic, oil or pastel.

Photography: all photos must be originals taken by the artist.

Dry Media: pen & ink, graphite, charcoal, colored pencils or scratchboard.

3-D Art: sculpture, glass, fiber, wood, pottery, jewelry (weight limit 150 lbs).

Mixed Media: including any of the above art mixed with digital media e.g. Procreate

2-D art must be gallery ready. Finished entry size is limited to 36" X 44" framed or 80" united (length plus width).

Entry fees: \$15.00 each or a maximum of 3 for \$40.00. Call for Entry applications available on GAA website (QR code above).

Delivery Date: February 2, 2026  
9:00 - 5:00 PM  
Tointon Gallery



## Movie Review

# *At Eternity's Gate*

Researched and written by Michelle Hamilton and Chatgpt



*At Eternity's Gate* (2018), directed by Julian Schnabel, is a visually and emotionally immersive portrait of Vincent van Gogh, featuring a spectacular performance by Willem Dafoe. It's not a traditional biopic, rather the film dives into the subjective experience of Van Gogh's final years, exploring the inner states of creativity, isolation and transcendence.

Schnabel, a painter turned filmmaker, combines impressionistic painterly cinematography with philosophical reflection to capture the way Van Gogh saw the world rather than simply recounting what happened to him. Schnabel's direction focuses more on *feeling* than fact. A recurring theme is that Van Gogh was painting not what he saw, but what he *felt*. The visuals are expressive not realistic. The camera blurs, tilts, and shifts focus as if we're seeing the world through Van Gogh's eyes — full of movement, color, and emotion. It's not about what's literally in front of him, but how it *feels* to him. This turns the film into an exploration of perception itself as it captures Van Gogh's inner world.

Instead of a straightforward plot, scenes flow like memories or thoughts. Conversations are philosophical and sometimes fragmented, suggesting Van Gogh's unstable mind. The dialogue between Van Gogh and Paul Gauguin (Oscar Isaac) or his priest (Mads Mikkelsen) often drifts into deep philosophical territory. As a viewer, we experience Van Gogh's loneliness, passion and confusion from the inside - not through exposition or fact but through mood, sound and imagery. The meager ethereal music score by Tatiana Lisovskaya complements the visuals, blending silence with surges of emotional intensity. The ambient sounds — wind, footsteps, the loud scratch of brush on canvas — anchor the viewer in Van Gogh's sensory world.

*At Eternity's Gate* is not for everyone. It's a movie for anyone who loves getting lost in art and emotions. If you enjoy films that are slow, thoughtful, and a little dreamy, this one's for you. It's less about a traditional story and more about *feeling* what Van Gogh felt — his loneliness, his obsession with color and light, and the way he saw the world differently.

Willem Dafoe steals the show, so if you're a fan of actors going all-in and giving a raw, unforgettable performance, you'll love this flick. And if you're curious about creativity, mental health, or what it's like to experience life through an artist's eyes, the film really hits these high notes. It's totally worth your time if you are up for an emotional ride that's basically stepping inside a Van Gogh painting.

## MADISON & MAIN *Winter Lights,* November & December 2025

*Winter Lights*, Madison & Main Gallery's 39th annual holiday show will feature original art, unique gifts, and one-of-a-kind ornaments. This show includes pieces designed to make the holidays bright and cheery.



The slate of twelve guest artists includes: Karen Archibeque – felted mittens, Dottie Boscamp – blown glass, Jeanne Braun – sculpture, Sandie Bredbenner – pottery, Carol Kreps – pastels, Julie Neri – hand built pottery, Lori Ozzello – wrapped animals, Nancee Sebenaler – pastels, Gia Sharma – oil, pen and ink, Cindy Trevizo – pottery, Robin Sweeton – fiber, and Rhonda Welch – folk Santas.

## LOVELAND MUSEUM

### Look Again: Portraits of Daring Women December 6, 2025 - April 4, 2026 Foote Gallery



In response to a growing climate of discrimination against women and other marginalized people in the United States, artist Julie Lapping Rivera began a series of portraits highlighting women who were often unsung in their time. This ongoing portfolio of woodcut and collage portraits offers an uplifting, positive and inclusive message to visitors. It was originally inspired by the New York Times "Overlooked" series, which since March of 2018 has been sharing the stories of remarkable people who were overlooked by the Times' obituaries in the past.

## V for Vegetables

### November 14 - February 14, 2026

Explore the history of the victory gardening movement through seed catalogs from Denver Botanic Gardens' special collections, and a variety of vintage materials demonstrating the significance and scale of the victory garden effort.

V for Vegetables is a bilingual exhibition that features inspirational artworks celebrating the capacity of the everyday



**THE LINCOLN GALLERY**  
**Artist Collaborative**  
Thompson Valley Art League (TVAL)

**2025 NATIONAL PHOTO SHOW AWARDS**

**BEST OF SHOW:**



"Life Is Good" 32x40 Photo by Leslie Le Coq - \$350

**1st Place AI/Digital Art:**



"Galaxy" 16x20 Photo by Vivian McAleavey - \$275

**1st Place Architecture & Still Life:**



"Oh Holy Night" 32x32 Photo by Gordon Middleton - \$425

**1st Place Landscape:**



"Shifting Sands" 16x24 Photo by Suzette McIntyre - \$495

**1st Place People:**



"Transcendence" - 16x20 Photo by Vivian McAleavey - \$325

**1st Place Wildlife:**



"Bird Tracks" 18x27 Photo by David Blow - \$450

Editor Note: 1st place landscapes *Shifting Sands* was awarded to Suzette McIntyre who was the guest presenter at the GAA September 8 program entitled *Layered Light*. Congratulations Suzette!

All National Photo Entries Available at: <https://www.lincolngallery.com/2025-national-photo-show-entries.html>

## Art Word Search and Quizzes

# Painting Terms

W Y E Y W M B L R W Z C X O S R F M F Y V G E F  
O O I A E A Q R P L A U I F Z N O I T F P U F B  
L P E Z V X T O T N R L D O M A G W D V L M O E  
A I H C P Q R E V A Q H D L P N O D X B J D S F  
T P V F S T A A R G J S Q G S Z A Z E X Y H L I  
A W U W R C S Y B P A I K M G K N N X C W B E N  
F Z D A R F P D P U O M G B C V I Y O R K Z W K  
S D I Y V F N Y H I R T S A G R C L E Z F B O E  
Y T L Z V R W D E H B N L O A E O L O T P C T T  
G I M H L I Z A M L B B T M L U B U C N T C R E  
C T X K Y Q S E E G P I A S R Z K N H I I E E L  
D W L U A E D N W M M R G Z I R P Z R A T R P L  
C A N M L I D S A W T I X Z A E L T E P A U A A  
L T V A U I Y L X L Z I R M D B N T P F I L P P  
N E O M N E K N U T Y J B U R P T N I O N E F A  
L R G G S B C P P X N S Y W O A T Q A E I A Q P  
Q B W O L L E Y M U I M D A C L K R C B U N O A  
C R T G I Z X B V B L K Y X Z L O E N U M B D I  
W U N F N O S M I R C A D V X E N C H T W L C N  
A S D D Y S L R P W L R E Y M T N H R P H U T T  
E H E J W B R P I G M E N T F E B U B E I E N B  
L E H W E N I T N E P R U T S F S R X R T D Z O  
H S B Q R X O Q D H I A E H C A U O G W E A A X  
O M P A I N T B R U S H E S R Z J I S B N T W O

ultramarine blue  
palette knife  
paper towels  
lamp black  
blending  
gouache  
gamsol  
oil

titanium white  
tube of paint  
waterbrushes  
turpentine  
portrait  
palette  
medium

cadmium yellow  
burnt sienna  
body colour  
paint box  
acrylic  
pigment  
easel

cerulean blue  
paintbrushes  
watercolour  
water pot  
crimson  
canvas  
ochre

---

**Note:** *Titanium* is misspelled in the above word search.

---

### True or False

1. Solar activity created a geomagnetic storm in November 2025?
2. Dale Harding hand makes his own pastel paints?
3. Matting is required to preserve all original artwork?
4. First prize winner in the landscape photography was recently a GAA guest presenter?
5. A maximum of six entries are allowed in the GAA Member Only *Brush with Nature* show at the Tointon Gallery in February 2026?

Answers on the second last page at the end of art resources.



## GAA MEETING MINUTES

### **GAA October Executive Board Meeting Minutes: September 29, 2025**

The Executive Board of the Greeley Art Association (GAA) met on September 29, 2025 at the home of Gail and Tom Mothershed. The meeting was called to order by GAA President Gail Mothershed at 12:45p.m.

**Members in Attendance:** Gail and Tom Mothershed, Joe Mora, Carol Larson, Mary Lynne Pruett, Claire McNear, Cameron Clements, and Michelle Hamilton.

**President's Report:** President Gail Mothershed reported that new member meetings have not taken place, yet, and new members will be introduced at the general meetings. When GAA has a field trip, there will be a short general meeting prior to the presentation. Many items in the storage unit were sorted and sensitive materials were shredded. Art works by Lydia Ruyle, which were left in the storage unit were given to interested GAA members at the last GAA meeting and remaining pieces were donated to the Art Department at the University of Northern Colorado. Gail and Tom Mothershed met with Jason Evenson, executive director of the Greeley Creative District (GCD), who is in charge of GCD membership, programs and events. According to President Mothershed, Jason expressed an interest for GCD to assist GAA with sitting the Stampede Western Art Exhibition and Sale(SWAES) in 2026. President Mothershed shared information for group and individual memberships to the new GCD Creative Center. The Creative Center will be a good resource for our members, once it is completed in 2026-2027.

**Secretary's Report:** Claire McNear summarized the September 2025 Executive Board and General Membership meeting minutes. The minutes for the September Executive Board and General Membership meetings were approved as written (Hamilton, Mora).

**Treasurer's Report:** Cameron Clements, Treasurer, reported that GAA has a balance of \$1,750.56 plus \$149.35 in petty cash. September expenses included reimbursement for newsletter printing and mailing, payment to Suzette McIntyre for the September GAA art presentation, and payment for recycle/shredding service of storage shed items. Cameron has contacted Cory Samples regarding the reimbursement to GAA from the Greeley Stampede. Receipts totaling \$1,860.62 remain outstanding at this time. A motion to accept the October 2025 financials was approved as presented (McNear, Larson).

**Membership Report:** Joe Mora announced that there were no additions to the GAA membership this past month.

**Newsletter Editor's Report:** Michelle Hamilton shared that the GAA newsletter, "The Unlimited Palette", was distributed in September. The next edition will be out in late November. Michelle is open to suggestions for the next artist profile.

**Programs:** President Mothershed reported on upcoming programs:  
October 9 - Field trip & demonstration at the Clay Center 1024 6 Ave, Greeley at 3:00 p.m.  
November 3rd - a portrayal of Georgia O'Keeffe by Kathy Swafford 3:00 p.m. at Farr Library.  
December 1st - Holiday pizza party and gift exchange 12:00 p.m. Location TBD.  
No other programs are scheduled at this time for 2026. President Mothershed stated that GAA general meetings will remain on the first Monday of the month with either Centennial or Farr Library as the meeting place. Additionally, there will be a meet and greet time with light snacks, along with a short general meeting before the presentation.

**Programs:** President Mothershed reported on upcoming programs:

October 9 - Field trip & demonstration at the Clay Center 1024 6 Ave, Greeley at 3:00 p.m.

November 3rd - a portrayal of Georgia O'Keeffe by Kathy Swafford 3:00 p.m. at Farr Library.

December 1st - Holiday pizza party and gift exchange 12:00 p.m. Location TBD.

No other programs are scheduled at this time for 2026.

President Mothershed stated that GAA general meetings will remain on the first Monday of the month with either Centennial or Farr Library as the meeting place. Additionally, there will be a meet and greet time with light snacks, along with a short general meeting before the presentation.

**Publicity:** Cameron Clements reported that he has attempted to gain access to the GAA Facebook account. He plans to post GAA historical information and recent art demos. Cameron will also set up video and zoom capabilities at the general meetings. There was discussion regarding the need for permission from members and presenters to share images and information on the site. At this time, access to the site will be limited.

**Historian:** Carol Larson shared that she has been sorting through GAA photo albums and historic articles which were in the storage unit. Carol plans to digitize the information that is of value to the organization.

## **OLD BUSINESS:**

**SWAES Update:** President Mothershed reported that the SWAES sub-committee, formed to share requests and information from the 2025 Stampede Western Art Exhibition and Sale (SWAES), met on September 17, 2025 to consolidate ideas and requests for the 2026 SWAES. President Mothershed sent an email to Cory Samples, Stampede Committee liaison, with a list of proposals including GAA members having a separate gallery space at the SWAES, allowing members who work the reception to not purchase a reception ticket, additional perks for the members sitting the show during the Stampede, notoriety of GAA associated with the SWAES on flyers and posters, a place for storing shipped artworks, and prize money for Artists' Choice and People's Choice awards. President Mothershed shared that the Stampede Committee will be on retreat in October, where Cory will present our requests. Regarding the financial requests, Cory will discuss our wishes with the Stampede Board.

**Tointon Gallery Art Show:** Michelle Hamilton presented the Call for Entry for the upcoming Tointon Gallery show, "A Brush with Nature", an artist collective of works from GAA members. The show will take place Feb 6 - 28th with delivery of art on Tuesday, February 3, from 9 a.m. to 5 p.m. at the Tointon Gallery. Art pick up date will be Monday March 2nd. The call for entry with dates and details will be sent out to all members.

## **NEW BUSINESS:**

**Executive Board Meeting Place and Time:** President Mothershed requested that we consider a new place and time for the next Executive Board Meeting. A meeting at 8:00a.m. on the last Monday of the month would be best to accommodate the majority of the Board members. Tom and Gail Mothershed have researched numerous locales in Greeley. The November Executive Board meeting will take place at 8:00 a.m. on Monday October 20th, date change due to a conflict with two board members, location to be determined (TBD). The December Executive Board meeting will held on Monday, November 24, 2025 at 8:00a.m. (Location TBD)

**Plein Air:** The GAA Plein Air events have been put on hold until next Spring. President Mothershed shared that Dale Harding has volunteered to coordinate future dates for GAA Plein Air activities.

**Request for Change to General Meeting Time:** President Mothershed made the Board aware that there has been a request to have evening meetings for members who are working during the times of the GAA General Membership meetings. Discussion followed with ideas of having recordings of the programs available online, meeting once every three months in the evenings to share program recordings and socialize with fellow GAA members, and the possibility of having general meetings, outings, or field trips on weekends. President Mothershed said that she will reach out to some of the members to get thoughts on options. The discussion was tabled until a later date.

President Mothershed adjourned the Executive Board Meeting at 2:23 p.m.

Respectfully submitted,  
Claire McNear, Secretary

## **GAA November Executive Board Meeting Minutes: October 20, 2025**

The Executive Board of the Greeley Art Association (GAA) met on October 20, 2025 at the Epic Egg Restaurant in Greeley, Colorado. The meeting was called to order by GAA President Gail Mothershed at 8:06 a.m.

**Members in Attendance:** Gail and Tom Mothershed, Cameron Clements, Carol Larson, Joe Mora, Mary Lynne Pruett, Michelle Hamilton, and Claire McNear.

**President's Report:** President Gail Mothershed reported that Liz Atkinson attended the new member meeting on Sunday, October 19th at the home of Gail and Tom Mothershed. The next new member meet and greet will be on Sunday October 26, 2025. Carol Larson and Cameron Clements expressed interest in attending the new member events. President Mothershed gave spotlight recognition to Colette Pitcher for her participation in the Greeley Creative District (GCD) as one of the co-founders and former GCD Board member. Colette and her art work were also recognized in the November 2025 issue of Plein Air Magazine. President Mothershed announced the Greeley Arts Legacy Hall of Fame ceremony will take place October 23, 2025, at the Union Colony Civic Center. Francis Denning, a former GAA member will be honored at the ceremony.

**Treasurer's Report:** Cameron Clements, Treasurer, reported that GAA has received the reimbursement from the Greeley Stampede for expenses at the Stampede Western Art Exhibition and Sale (SWAES). Expenses included reimbursement for the newsletter, payment to Tim Preston for the October program, and a \$15.00 service charge to Chase bank. GAA has a balance of \$3,596.18 plus \$149.35 in petty cash, totaling \$3,745.53. A motion to accept the November 2025 financials was approved as presented (Hamilton, Mora).

**Publicity:** Cameron Clements reviewed a Video Release/Consent form, which may be used to gain permission for publishing photos and GAA presentations on the GAA website and social media. Discussion followed with suggestions to add photographs/images to the verbiage as well as a statement that the videos are not for monetary gain. The videos and photos will be accessible to GAA members only. No action was taken at today's meeting, pending modifications to the form.

**Historian:** Carol Larson shared that she has been sorting through GAA photo albums and historic articles which were in the storage unit. Carol said she will bring photo albums to a GAA meeting for members to view and take pictures if they are interested, as not all photos will be kept for the digital format.

**Secretary's Report:** Claire McNear summarized the October 2025 Executive Board and General Membership meeting minutes. Michelle Hamilton suggested the minutes be sent to the Executive Board following the monthly General Meeting. Minutes for the October 2025 Executive Board and General Membership meeting were approved as written (Hamilton, T. Mothershed).

**Membership Report:** Joe Mora announced that there were no additions to the GAA membership this past month. He reminded us that membership dues will be up for renewal. GAA dues must be paid by January 31, 2026. Payment may be made online with a credit card or by check payable to GAA.

**Programs:** President Mothershed reported on upcoming programs:

November 3rd - a portrayal of Georgia O'Keeffe by Kathy Swafford 3:00 p.m. at Farr Library.

December 1st - Holiday pizza party and gift exchange 12:00 p.m. Location TBD.

No other programs are scheduled at this time for 2026.

President Mothershed stated that GAA general meetings will remain on the first Monday of the month with either Centennial or Farr Library, if available, as the meeting place. Other ideas for meeting locations were discussed. President Mothershed requested that a card with a thank you be given to the presenters. Claire McNear, Secretary, will get a card for the November presenter. Carol Larson suggested that GAA members donate cards for future presenters and/or grieving members.

**Newsletter Editor's Report:** Michelle Hamilton shared that the GAA newsletter, "The Unlimited Palette", will be distributed in late November. Michelle will be interviewing Dale Harding for the next artist profile.

### **OLD BUSINESS:**

**SWAES Update:** President Mothershed shared the description of a Stampede Wrangler, which is a support group for the Stampede. According to president Mothershed, a "Wrangler" is to provide 10 hours of volunteer time and will then receive a variety of passes and discounts related to the Stampede. President Mothershed said that there needs to be clarification from Cory Samples, Stampede Committee Coordinator in charge of the SWAES, if GAA members can qualify as a Stampede Wrangler. President Mothershed reported that she has been waiting for correspondence from Cory Samples since the last GAA meeting. The Stampede Committee will be on retreat October 22, where Cory will present our requests. Regarding the financial requests for prize money, Cory will discuss our wishes with the Stampede Board.

**Tointon Gallery Art Show:** Michelle Hamilton reported that the Call for Entry for the upcoming Tointon Gallery show, "A Brush with Nature", an artist collective of works from GAA members was emailed to all GAA members. Paper copies of the Call for Entry will be available at the Showcase. The GAA Tointon Gallery art show will take place Feb 6 - 28th. Delivery of art will be on Tuesday, February 3, from 9 a.m. to 5 p.m. at the Tointon Gallery, 651 10th Avenue, Greeley, Colorado. Art pick up date will be Monday March 2nd.

### **NEW BUSINESS:**

**Plein Air:** The GAA Plein Air events have been put on hold until next Spring. President Mothershed shared that Dale Harding has created a very thorough survey for GAA members to express their interest in Plein Air events. This survey has been viewed by the Executive Board. Discussion took place on changing the name of the group's events to assure members that painting is not mandatory. It was also suggested that Dale give a presentation to GAA on Plein Air. With Dale's approval, Cameron Clements is willing to send out the survey to the members and have paper copies available at the Showcase. Dale has volunteered to coordinate future dates for GAA Plein Air activities, if there is interest within the group.

**Change to General Meeting Location:** President Mothershed made the Board aware that the Farr Library is not available to our group on a consistent basis. The Board decided that a phone tree will be created for Executive Board members to call the general membership to remind folks of meeting times and locations. The phone calls should take place one week before the general meeting. Cameron Clements volunteered to send out a phone tree to Board members. There was a request to change the time of the GAA General Membership meetings. One Board member suggested that meetings take place earlier in the afternoon. Another Board member suggested that meetings take place later in the afternoon. Discussion followed with the decision to keep the time at 3:00 p.m. to reduce confusion for our members.

**ANNOUNCEMENTS:**

**Executive Board Meeting Place and Time:** The December GAA Executive Board meeting will be held on Monday, November 24, 2025 at 8:00a.m. at the Epic Egg, 3830 W. 10th St., Greeley, Colorado.

President Mothershed adjourned the Executive Board Meeting at 9:23 a.m.

Respectfully submitted,  
Claire McNear, Secretary

## **GAA General Membership Meeting Minutes**

November General Membership Meeting November 3, 2025

President Gail Mothershed called the November 3, 2025 GAA General Meeting to order at 3:15 p.m. at the Farr Meeting room at the Farr Library in Greeley. Thirty-one members attended the meeting.

**President Report:** President Mothershed summarized the officer reports from the November 2025 Executive Board Meeting including the approved October meeting minutes and the October Treasurer's report. GAA received reimbursement for expenses from the Greeley Stampede. The current GAA Treasury is \$3745.50.

President Mothershed spotlighted GAA Member, Colette Pitcher who was featured in a recent edition of the Plein Air magazine. The Greeley Creative District (GCD) also highlighted Colette as one of the founding members of the GCD. The GCD is offering 'Sneak-a-Peek' tours of the downtown Creative District Building at 1:30 on November 10, 13, 17, 18 and 20. Membership chair, Joe Mora, introduced new GAA member, Liz Atkinson who enjoys working in mixed media and with scratch board.

GAA member, Dale Harding discussed ideas for adapting the GAA Plein Air events to expand the learning experiences and offer variable days. The Plein Air events would be open to any type of art/creativity/media (painting, drawing, sketching, photography, observation). Potentially, two sections are being considered. One section focusing on beginning strategies to help provide members with a firm base (basic shapes, atmospheric perspective etc.) for Plein Air. The second group could be more advanced outdoor creative experiences.

GAA yearly member renewals are due on or before January 31, 2026. The yearly dues are payable by check in the sum of \$30.00 per individual member or \$40.00 per couple. Add \$10.00 to dues if member prefers a mailed hard copy of the quarterly newsletter. Mail checks to GAA 1335 - 8th Avenue, Greeley, CO 80631. GAA member dues are payable by credit card on the GAA website at: <https://www.greeleyart.org> select JOIN. Dues paid by credit card include fees for credit card use as follows: \$33.00 individual member or \$45.00 couple membership. An additional \$10.00 payment is required if the member prefers a mailed hard copy of the quarterly newsletter.

President Mothershed asked GAA members to donate blank handmade art cards to send to members experiencing health challenges and/or grief and loss related issues. Cards can be given to any GAA Board Member or dropped off in the GAA mail box at the Showcase Art Center. Michelle Hamilton will disseminate the next GAA newsletter in late November 2025.

With recent meeting location changes, the GAA Executive Board has implemented a phone-tree. Approximately, one week prior to the GAA General Meeting, members can expect a phone call from one of the board members to remind them of the meeting location, time and program.

### **OLD BUSINESS:**

**Tointon Gallery Show:** Michelle Hamilton reported that the GAA Member only Art Show at the Tointon Gallery, "A Brush with Nature", will be February 6-28, 2026. The Call for Entry application has been sent out to all GAA members. The art show is open to GAA members in good standing (paid 2026 dues). Information and applications are available on the homepage (scroll down) of the GAA website at: <https://www.greeleyart.org/>

**Newsletter Editor's Report:** Michelle Hamilton shared that the GAA newsletter, "The Unlimited Palette", will be distributed in late November. Michelle will be interviewing Dale Harding for the next artist member profile.

**Programs:** President Mothershed reported on upcoming programs:

November 3rd - a portrayal of Georgia O'Keeffe by Kathy Swafford 3:00 p.m. at Farr Library.

December 1st - Holiday pizza party and gift exchange 12:00 p.m. Location TBD.

No other programs are scheduled at this time for 2026.

President Mothershed stated that GAA general meetings will remain on the first Monday of the month with either Centennial or Farr Library, if available, as the meeting place. Other ideas for meeting locations were discussed. President Mothershed requested that a card with a thank you be given to the presenters. Claire McNear, Secretary, will get a card for the November presenter. Carol Larson suggested that GAA members donate cards for future presenters and/or grieving members.

### **OLD BUSINESS:**

**SWAES Update:** President Mothershed shared the description of a Stampede Wrangler, which is a support group for the Stampede. According to president Mothershed, a "Wrangler" is to provide 10 hours of volunteer time and will then receive a variety of passes and discounts related to the Stampede. President Mothershed said that there needs to be clarification from Cory Samples, Stampede Committee Coordinator in charge of the SWAES, if GAA members can qualify as a Stampede Wrangler. President Mothershed reported that she has been waiting for correspondence from Cory Samples since the last GAA meeting. The Stampede Committee will be on retreat October 22, where Cory will present our requests. Regarding the financial requests for prize money, Cory will discuss our wishes with the Stampede Board.

**Tointon Gallery Art Show:** Michelle Hamilton reported that the Call for Entry for the upcoming Tointon Gallery show, "A Brush with Nature", an artist collective of works from GAA members was emailed to all GAA members. Paper copies of the Call for Entry will be available at the Showcase. The GAA Tointon Gallery art show will take place Feb 6 - 28th. Delivery of art will be on Tuesday, February 3, from 9 a.m. to 5 p.m. at the Tointon Gallery, 651 10th Avenue, Greeley, Colorado. Art pick up date will be Monday March 2nd.

### **NEW BUSINESS:**

**Plein Air:** The GAA Plein Air events have been put on hold until next Spring. President Mothershed shared that Dale Harding has created a very thorough survey for GAA members to express their interest in Plein Air events. This survey has been viewed by the Executive Board. Discussion took place on changing the name of the group's events to assure members that painting is not mandatory. It was also suggested that Dale give a presentation to GAA on Plein Air. With Dale's approval, Cameron Clements is willing to send out the survey to the members and have paper copies available at the Showcase. Dale has volunteered to coordinate future dates for GAA Plein Air activities, if there is interest within the group.

**NEW BUSINESS:** The GAA Executive Board is working on obtaining consent to video recording the monthly programs. The recordings will be offered via a weblink for GAA members who could not attend the program or choose members who are interested in reviewing the program.

**Upcoming Programs:**

December 1, 2025 is the date for the GAA Holiday Party. The party will take place at noon at the LINC Library. Pizza lunch and soft drinks are provided by GAA. During the holiday party a member wrapped gift exchange includes new or gently-used art-related gifts.

President Mothershed adjourned the General Membership meeting at 3:37 p.m.

**Today's Program:** GAA members enjoyed Kathy Swafford, Legendary Lady portraying America's most famous woman artist, Georgia O'Keeffe. Ms. O'Keeffe stayed true to her own vision and style, in spite of criticism and scandal!

Respectfully submitted,

Michelle Hamilton for Claire McNear

## Resources, Exhibits, Workshops and Shows

Greeley Art Association - [www.greeleyart.org](http://www.greeleyart.org)

Greeley Creative District - [www.greeleycreativedistrict.org](http://www.greeleycreativedistrict.org)

Colorado Watercolor Society - [www.coloradowatercolorsociety.org](http://www.coloradowatercolorsociety.org)

Longmont Artists Guild (Longmont) [www.longmontartistsguild.org](http://www.longmontartistsguild.org)

Boulder Art Association (Boulder) - [www.boulderartassociation.org](http://www.boulderartassociation.org)

Western Colorado Watercolor Society (Grand Junction) - [www.wcwsociety.net](http://www.wcwsociety.net)

Mountainside Art Guild (Lakewood) - [www.mtinsideartguild.org](http://www.mtinsideartguild.org)

Art Center and Gallery of Estes Park - [www.artcenterofestes.com](http://www.artcenterofestes.com)

Art in the Aspens (various locations) - [www.artaspens.com](http://www.artaspens.com)

University of Northern Colorado, School of Art & Design - [www.arts.unco.edu](http://www.arts.unco.edu)

Roxborough Arts Council (Douglas County) - [www.roxartscouncil.org](http://www.roxartscouncil.org)

Pastel Society of Colorado - [www.pastelsocietyofcolorado.org](http://www.pastelsocietyofcolorado.org)

Thompson Valley Art League (Loveland) - [www.lincolngallery.com](http://www.lincolngallery.com)

Heritage Fine Arts Guild (Arapahoe County) - [www.heritage-guild.com](http://www.heritage-guild.com)

Evergreen Artists Association (Evergreen) - [www.evergreenartists.org](http://www.evergreenartists.org)

Call for Entry- <https://www.callforentry.org/>

## Answers from Multiple Choice Questions on page 20

### True or False

1. **TRUE.** Solar activity created a November 2025 geomagnetic storm which enhanced the visibility of the aurora borealis in northern Colorado.
2. **TRUE.** Dale hand makes his own pastels.
3. **FALSE.** Matting is recommended for some but NOT all artwork?
4. **TRUE.** Suzette McIntyre won 1st prize in the landscape photography; Suzette was guest artist at GAA program September 8, 2025.
5. **FALSE.** A maximum of **three** entries are allowed in the GAA Member Only *Brush with Nature* show at the Tointon Gallery in February 2026.



## GREELEY ART ASSOCIATION (GAA) ANNUAL MEMBERSHIP APPLICATION

### GAA Annual Membership - Jan 31 - Jan 31 yearly

Fill out yearly membership application form below. Mail application with your check for the appropriate amount to the Greeley Art Association (GAA) at the address below:

GAA 1335 - 8th Avenue, Greeley, CO. 80631

NAME: \_\_\_\_\_

DATE: \_\_\_\_\_

ADDRESS: \_\_\_\_\_

CITY: \_\_\_\_\_ STATE: : \_\_\_\_\_

ZIP: \_\_\_\_\_

PHONE NUMBER: \_\_\_\_\_

EMAIL: \_\_\_\_\_

MEDIUMS: \_\_\_\_\_

**Please check one:**      \_\_\_\_\_ Renewal    \_\_\_\_\_ New

#### Select type of membership:

\_\_\_\_\_ \$30. Individual with quarterly digital newsletter

\_\_\_\_\_ \$40. Individual with quarterly hard copy mailed newsletter

\_\_\_\_\_ \$40. Couple (Spouse's name: \_\_\_\_\_)

\_\_\_\_\_ \$15. **New member only** prorated from August 1 - January 31

If you prefer to pay your GAA Membership dues by credit card\*, go to the GAA website at <https://www.greeleyart.org/>. Click on *JOIN*. \*Note: fees for credit card use are added.

